

Fact Sheet

CGS HOLDINGS INC.
(TSE Standard Market 6633)
2026Q1 Fact Sheet



* Profile of CGS HOLDINGS INC.

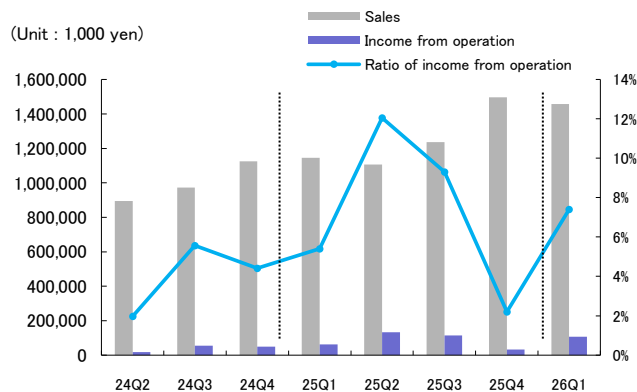
CGS HOLDINGS INC. was established in April 2025 through a collaboration between two domestic CAD/CAM manufacturers. With our company as a pure holding company, we have under our umbrella C&G SYSTEMS INC., which has supported the Japanese manufacturing industry for half a century with CAD/CAM systems for molds, and NDES INC, which provides solutions centered on CAD/CAM/CAE to support automation and efficiency in manufacturing sites, and companies that can support the standardization and digitization of the entire manufacturing industry, including molds, which will continue to evolve, as well as the promotion of smart manufacturing and the utilization of on-site data. Through this collaboration, we aim to establish ourselves as a “DX integrator for the manufacturing industry” that broadly supports the future of Japan's manufacturing industry.

* Transition of main financial data

(Unit : 1,000 yen)

		2022	2023	2024	2025	2026
						Q1
Income Statement	Sales	4,421,526	3,826,057	3,927,559	4,982,129	1,457,144
	Cost of goods sold	1,669,640	1,320,150	1,333,525	1,909,876	604,983
	Expenses	2,296,525	2,415,112	2,435,536	2,729,352	744,365
	Operating Income	455,360	90,793	158,497	342,900	107,795
	Other income	124,416	142,895	128,500	118,231	33,917
	Other expenses	67,759	82,889	66,298	73,075	18,433
	Ordinary Income	512,017	150,800	220,698	388,056	123,279
	Net income	293,757	68,372	121,866	263,954	40,268
B / S	Total assets	5,734,657	5,584,231	6,047,684	7,115,480	6,959,716
	Total liabilities	2,593,830	2,457,952	2,816,024	3,604,819	3,557,304
	Net assets	3,140,827	3,126,279	3,231,659	3,510,660	3,402,412

* Transition of the results on quarter basis



* Financial indicator

	2026 Q1	FY2025
Equity Ratio (%)	47.1	47.2
PER (times)	75.3	13.1
PBR (times)	0.93	1.03
EPS(yen)	4.24	27.78
BPS(yen)	344.65	353.83
ROE (%)	—	8.1
ROA (%)	—	4.0

* Segment sales and operating income

(Unit : 1,000yen)

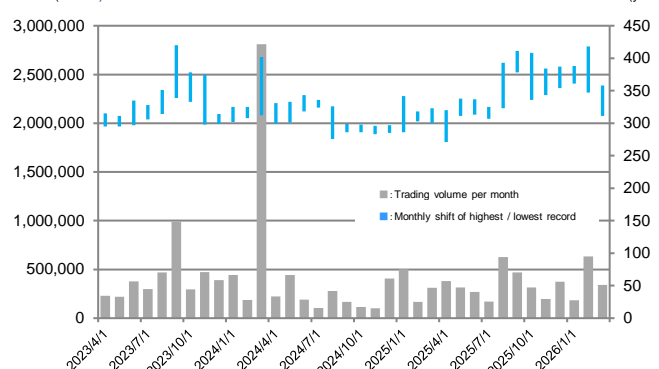
	2026 Q1	2025 Q1	Change (Y-o-Y)
<CAD/CAM products>			
Sales	1,411,756	904,021	+56.2%
Operating income	135,266	52,866	+155.9%
<Mold and die manufacturing>			
Sales	45,387	240,910	(81.2%)
Operating income	(27,471)	8,956	—

* Stock Information

(As of Dec 31st, 2025)

Fiscal year-end	December 31
Authorized shares	48,000,000
Shares issued and outstanding	9,801,549
Number of unit stocks	100
Number of shareholders	4,270
Principal Shareholders	YAMAGUCHI CREATE CO.,LTD., Nippon Life Insurance Company, Employee Holding Association, Rhythm Co., Kiyoharu Inata, Shuji Yamaguchi, Ivy Co., Ltd., Custody Bank of Japan, JP JPMSE LUX RE CITIGROUP GLOBAL MARKETS L EQ CO, Norita-Kogyo

(Stocks) (yen)



【Contact Us】

CGS HOLDINGS INC. IR section / E-mail: cgshdir@cgshd.co.jp URL: <https://www.cgshd.co.jp/>