

# Fact Sheet

**CGS HOLDINGS INC.**  
(TSE Standard Market 6633)  
**2025Q3 Fact Sheet**



## \* Profile of CGS HOLDINGS INC.

CGS HOLDINGS INC. was established in April 2025 through a collaboration between two domestic CAD/CAM manufacturers. With our company as a pure holding company, we have under our umbrella C&G SYSTEMS INC., which has supported the Japanese manufacturing industry for half a century with CAD/CAM systems for molds, and NDES INC, which provides solutions centered on CAD/CAM/CAE to support automation and efficiency in manufacturing sites, and companies that can support the standardization and digitization of the entire manufacturing industry, including molds, which will continue to evolve, as well as the promotion of smart manufacturing and the utilization of on-site data. Through this collaboration, we aim to establish ourselves as a “DX integrator for the manufacturing industry” that broadly supports the future of Japan's manufacturing industry.

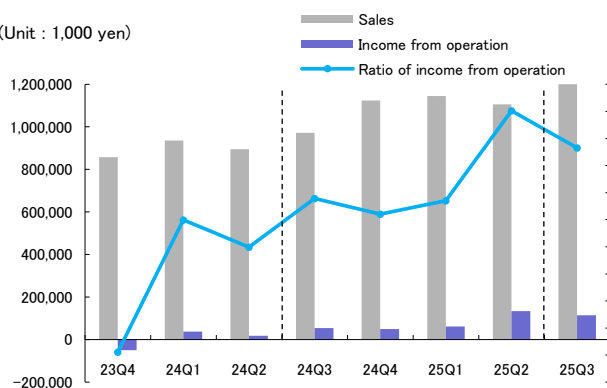
## \* Transition of main financial data

(Unit : 1,000 yen)

		2021	2022	2023	2024	2025		
						Q1	Q2	Q3
Income Statement	Sales	3,744,841	4,421,526	3,826,057	3,927,559	1,144,931	2,250,495	3,486,577
	Cost of goods sold	1,358,411	1,669,640	1,320,150	1,333,525	448,847	804,331	1,282,944
	Expenses	2,109,889	2,296,525	2,415,112	2,435,536	634,261	1,251,103	1,893,643
	Operating Income	276,541	455,360	90,793	158,497	61,822	195,060	309,989
	Other income	169,872	124,416	142,895	128,500	51,455	70,588	97,733
	Other expenses	68,954	67,759	82,889	66,298	18,931	39,579	51,934
	Ordinary Income	377,459	512,017	150,800	220,698	94,346	226,069	355,787
	Net income	218,889	293,757	68,372	121,866	53,437	191,751	242,137
B / S	Total assets	5,365,043	5,734,657	5,584,231	6,047,684	5,777,517	5,978,788	6,071,852
	Total liabilities	2,503,780	2,593,830	2,457,952	2,816,024	2,614,497	2,713,168	2,716,519
	Net assets	2,861,262	3,140,827	3,126,279	3,231,659	3,163,019	3,265,619	3,355,332

## \* Transition of the results on quarter basis

(Unit : 1,000 yen)



## \* Financial indicator

	2025 Q3	FY2024
Equity Ratio (%)	54.1	52.8
PER (times)	16.1	22.6
PBR (times)	1.19	0.86
EPS(yen)	25.48	12.83
BPS(yen)	345.41	335.77
ROE (%)	—	3.89
ROA (%)	—	2.1

## \* Segment sales and operating income

(Unit : 1,000yen)

<CAD/CAM products>			
	2025 Q3	2024 Q3	Change (Y-o-Y)
Sales	2,736,446	2,581,799	+6.0%
Operating income	179,945	146,102	+23.2%

<Mold and die manufacturing>			
	2025 Q3	2024 Q3	Change (Y-o-Y)
Sales	750,131	221,606	+238.5%
Operating income	130,043	(37,138)	—

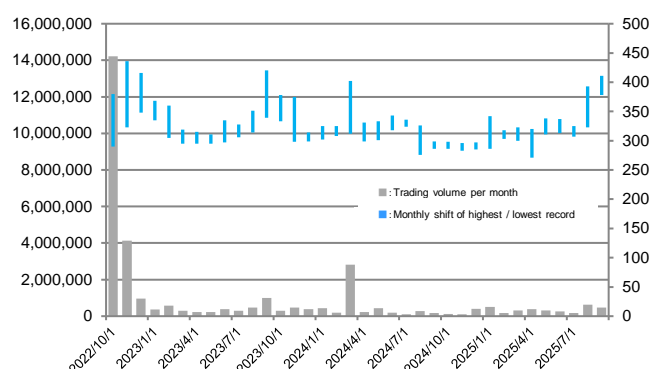
## \* Stock Information

(As of June 30th, 2025)

Fiscal year-end	December 31
Authorized shares	48,000,000
Shares issued and outstanding	9,801,549
Number of unit stocks	100
Number of shareholders	4,334
Principal Shareholders	YAMAGUCHI CREATE CO.,LTD., Nippon Life Insurance Company, Employee Holding Association, Kiyoharu Inata, Shuji Yamaguchi, Rhythm Co., Custody Bank of Japan, THE BANK OF NEW YORK MELLON 140040, Norita-Kogyo, Akira Hoshikawa

(Stocks)

(yen)



## 【Contact Us】

CGS HOLDINGS INC. IR section / E-mail: [cgshdir@cgshd.co.jp](mailto:cgshdir@cgshd.co.jp) URL: <https://www.cgshd.co.jp/>