

# Fact Sheet

**CGS HOLDINGS INC.**  
(TSE Standard Market 6633)  
2025Q1 Fact Sheet



## \* Profile of CGS HOLDINGS INC.

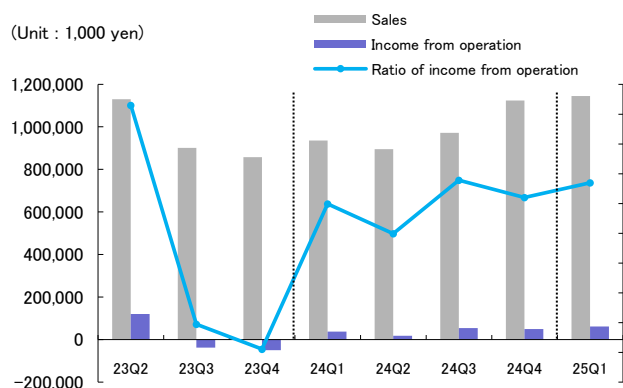
CGS HOLDINGS INC. was established in April 2025 through a collaboration between two domestic CAD/CAM manufacturers. With our company as a pure holding company, we have under our umbrella C&G SYSTEMS INC., which has supported the Japanese manufacturing industry for half a century with CAD/CAM systems for molds, and companies that can support the standardization and digitization of the entire manufacturing industry, including molds, which will continue to evolve, as well as the promotion of smart manufacturing. and the utilization of on-site data. Through this collaboration, we aim to establish ourselves as a "DX integrator for the manufacturing industry" that broadly supports the future of Japan's manufacturing industry.

## \* Transition of main financial data

(Unit : 1,000 yen)

		2021	2022	2023	2024	2025 Q1
Income Statement	Sales	3,744,841	4,421,526	3,826,057	3,927,559	1,144,931
	Cost of goods sold	1,358,411	1,669,640	1,320,150	1,333,525	448,847
	Expenses	2,109,889	2,296,525	2,415,112	2,435,536	634,261
	Operating Income	276,541	455,360	90,793	158,497	61,822
	Other income	169,872	124,416	142,895	128,500	51,455
	Other expenses	68,954	67,759	82,889	66,298	18,931
	Ordinary Income	377,459	512,017	150,800	220,698	94,346
	Net income	218,889	293,757	68,372	121,866	53,437
B / S	Total assets	5,365,043	5,734,657	5,584,231	6,047,684	5,777,517
	Total liabilities	2,503,780	2,593,830	2,457,952	2,816,024	2,614,497
	Net assets	2,861,262	3,140,827	3,126,279	3,231,659	3,163,019

## \* Transition of the results on quarter basis



## \* Financial indicator

	2025 Q1	FY2024
Equity Ratio (%)	53.7	52.8
PER (times)	55.7	22.6
PBR (times)	0.96	0.86
EPS(yen)	5.62	12.83
BPS(yen)	326.26	335.77
ROE (%)	—	3.89
ROA (%)	—	2.1

## \* Segment sales and operating income

<CAD/CAM products> (Unit : 1,000yen)			
	2025 Q1	2024 Q1	Change (Y-o-Y)
Sales	904,021	844,157	+7.1%
Operating income	52,866	47,129	+12.2%

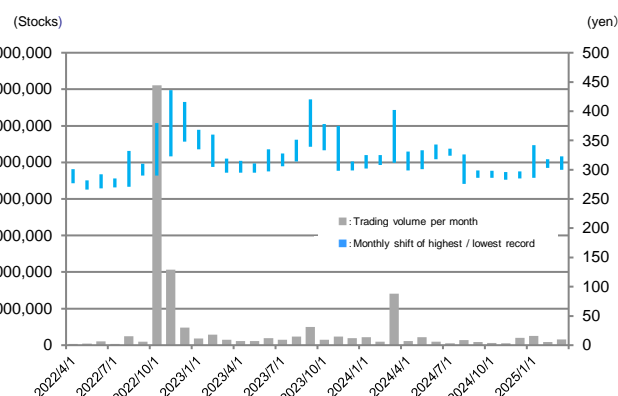
<Mold and die manufacturing>			
	2025 Q1	2024 Q1	Change (Y-o-Y)
Sales	240,910	91,222	+164.1%
Operating income	8,956	(9,929)	—

## \* Stock Information

(As of Dec 31st, 2024)

Fiscal year-end	December 31
Authorized shares	48,000,000
Shares issued and outstanding	9,801,549
Number of unit stocks	100
Number of shareholders	4,506
Principal Shareholders	YAMAGUCHI CREATE CO.,LTD., Nippon Life Insurance Company, Employee Holding Association, Kiyoharu Inata, Shuji Yamaguchi, Rhythm Co., THE BANK OF NEW YORK MELLON 140040, NAGAWA CO., Ltd, Norita-Kogyo, Custody Bank of Japan

\* CGS HOLDINGS INC. has 200,182 stocks as a treasury stock, but they are pulled from above list.



## 【Contact Us】

CGS HOLDINGS INC. IR section / E-mail: cgshdir@cgshd.co.jp URL: <https://www.cgshd.co.jp/>