

Jan 7, 2020

To The Press

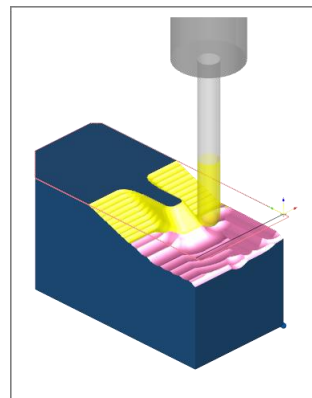
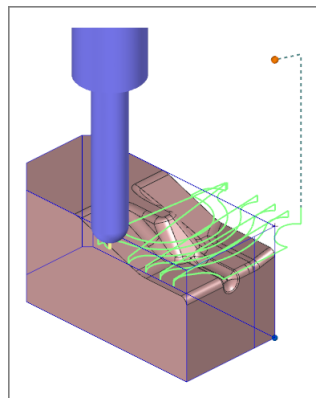
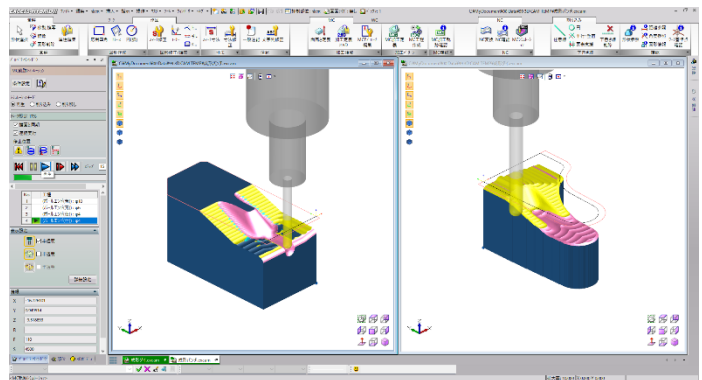
C&G SYSTEMS INC.

## Newly Added High Precision “3-Axis CAM”

In February, our company (President: Seiichi Shiota) will release “Ver5.1”, the new version of EXCESS-HYBRID II, the 2D/3D hybrid type CAD/CAM system for molds & dies.

In this new version, Machining Center (MC) has expanded by adding the function of “3-axis CAM”. Therefore, the new function enables the recognition of 3D shape in CAM. To add to the conventional functions that includes drilling and 2 axis pocket machining, it has brought us to the realization that the practice creates machining data mixed with 3-axis paths in a short time, which is supposed to be difficult for recognizing in 2D shape. The function fulfills the great precision and efficiency in machining since it equips the same operation employed in CAM-TOOL, which has a proven track record in 3 axis paths.

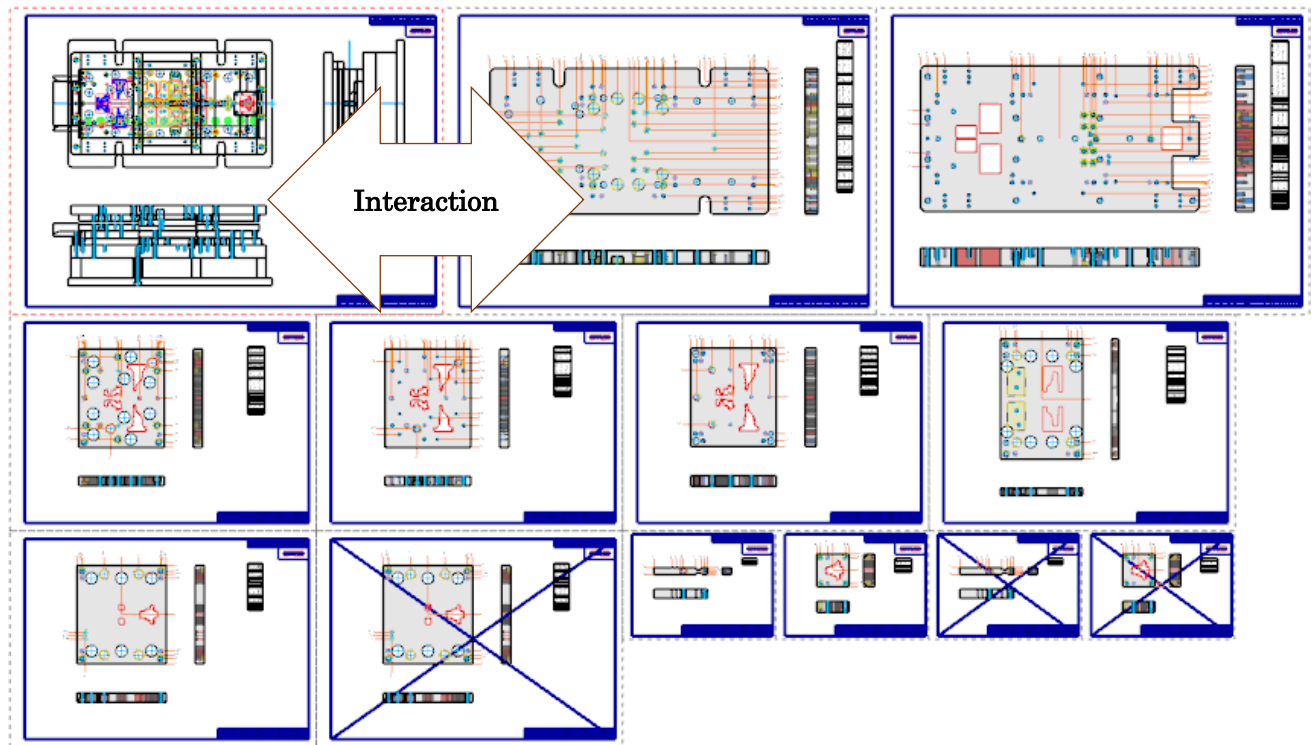
This function is divided into two parts of “Rough Cutting” and “Finish Machining”. “Rough Cutting” mode copes with “Z-level Rough Cutting” and “Scanning-line Rough Cutting” and “Finish Machining” mode copes with the three of “Z-level finishing”, “Rest” and “Along Surface”.



Jan 7, 2020

## Interframe Linkage

“Frame function”, which can create drawings of different scales and paper sizes within a document in CAD, is now able to link the contents between an assembly drawing created in a mainframe and part drawings arranged as subframes. Therefore, any of the modifications in the mainframe or subframes is reflected interactively internally. A great deal of time and effort in the process of modifying drawings will be greatly reduced and the size for sharing data has come to be less, especially when you have a drawing change.

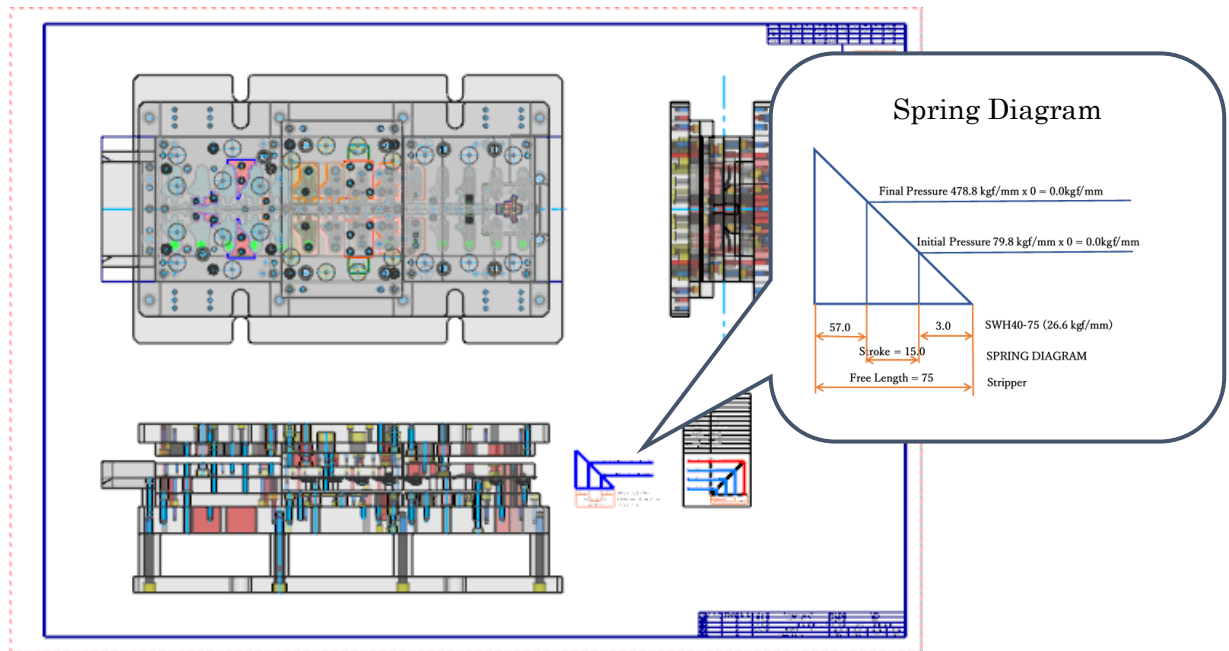


## “Spring Graph” Function Newly Added

The function that creates the “Spring Graph” of a chosen spring part has been newly added.

According to the information of the spring parts, it can calculate the spring load value of the distortion point on the part and can create the “spring Graph” instantly. In addition, by registering the information showing a drawing as a template, our users can save them as their own formats.

Jan 7, 2020



### Equipped with 37 New Functions

This version has been additionally equipped with 37 new overall functions within modules such as molding options, surface-modeling and CAM.

\* \* \*

[Product Prices] (All prices below are in Japanese Yen.)

¥600,000 - Minimum Module Configuration

(Additional Prices for CAM Options)

- 2-axis CAM (MC Basic) : 900,000 JPY
- 3-axis CAM (Roughing) : 600,000 JPY
- 3-axis CAM (Finishing) : 1,000,000 JPY

\*Taxes and the maintenance fees are excluded.

\*The price depends on the module configuration.

Jan 7, 2020

[Company Information]

- Foundation : July 2, 2007 (\*1)
- Capital : ¥500,000,000-
- Description of Business : Development/Sales/Support of CAD/CAM System for Mold & Die, and Production Management Systems

(\*1) Our company is a CAD/CAM solution developer founded in 2010 as the result of a business integration and merger with Computer Engineering (founded in 1978) and Graphic Products (founded in 1981). Both companies have more than a 30-year history, and we now have upwards of 6,000 domestic customers and upwards of 1,000 overseas customers.

Note: All company and product names in this release are trademarks or registered trademarks of their respective companies.

Questions and Inquiries

Mr. Tatsuya Izawa, Public Relations, C&G Systems INC.  
Tokyo Headquarters (Shinagawa-ku, Tokyo)  
Kitakyushu Headquarters (Kitakyushu-city, Fukuoka)

E-mail: [cgs\\_pr@cgsys.co.jp](mailto:cgs_pr@cgsys.co.jp) <http://www.cgsys.co.jp/en/>