

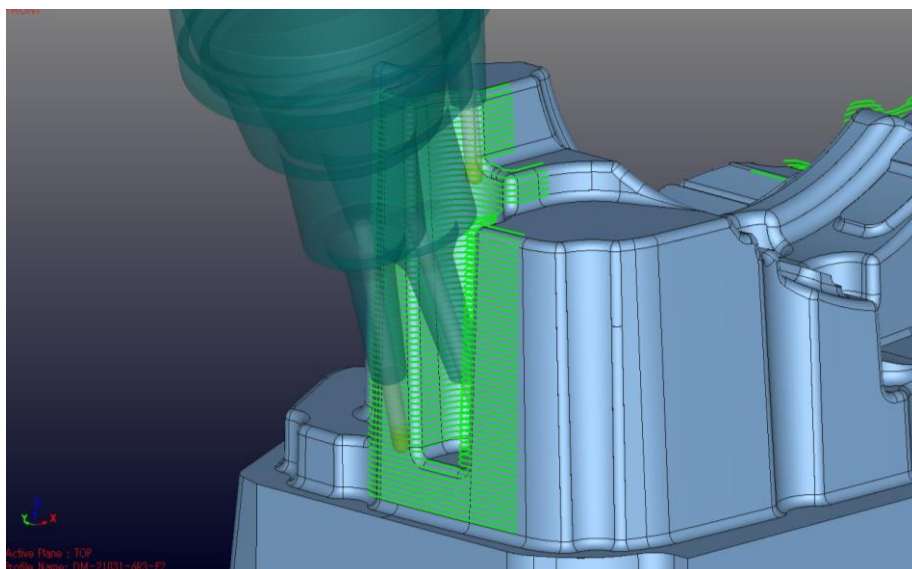
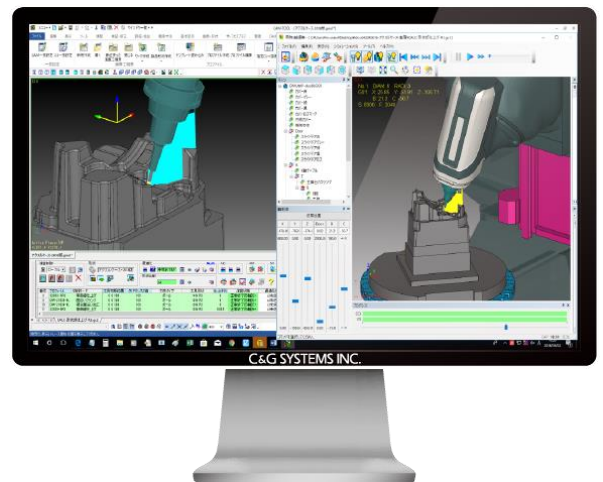
To the Press

C&G SYSTEMS INC.

Optimized Simultaneous 5-Axis Automatic Conversion by New Algorithm

In April, our company (President: Seiichi Shiota) will release “V15.1”, the new version (Hereafter “this version”) of CAM-TOOL which is the CAD/CAM system corresponding to the 5-Axis machining center for molds & dies.

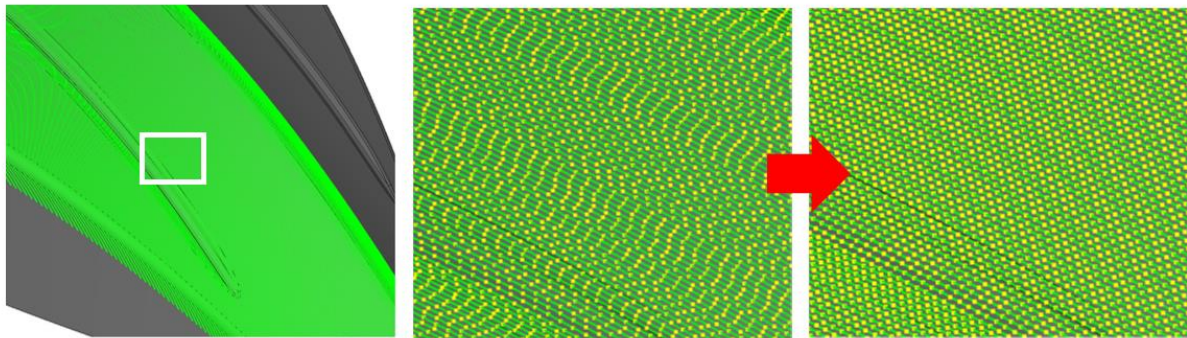
In this version, we have developed 5-Axis conversion algorithm that significantly decreases the occurrence of “inefficient interference avoidance” or “warning exit by interference” by automatically calculating un-interfered fixed tilt angles on “simultaneous 5-axis automatic conversion function (simultaneous 5-axis auto)”. The concept of “simultaneous 5-axis auto” is to ensure high quality finished surfaces with easy operations by heightening machining accuracy by minimizing sudden interference avoidance actions and the number of axes that move at the same time. Users can create high precision and high efficiency 5-axis machining data optimized by this new algorithm only by choosing an angle value that indicates interference avoidance.



Simultaneous 5-axis Auto (Interference Avoidance)

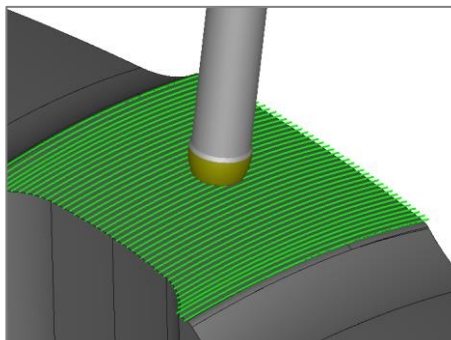
Equipped with CL Control Point Rearrangement Function

“CL control point rearrangement function” supports the improvement of quality and precision of machining surfaces with smooth machining operations by standardizing the acceleration and deceleration of a machining machine by rearranging and aligning CL control points (end points of straight lines of tool loci that have been liner-interpolated) according to a designated parameter.

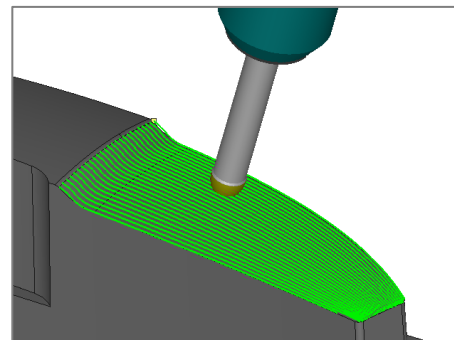


Extended Machining Modes of Deformed Tools

By extending specific machining modes such as “contour line finishing,” “traveling line regions,” or “flat parts circling” of deformed tools like barrel-shaped or lens-shaped, to the machining modes of “along composite surface machining” and “along surface offset machining,” gently-sloping surfaces which have been being machined by ball tools so far can also be machined by these deformed tools with high efficiency.



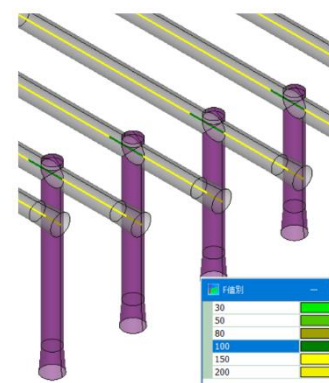
Along Surface Offset Machining



Along Composite Surface Machining

Gun Drill Cross Drilling Compliant

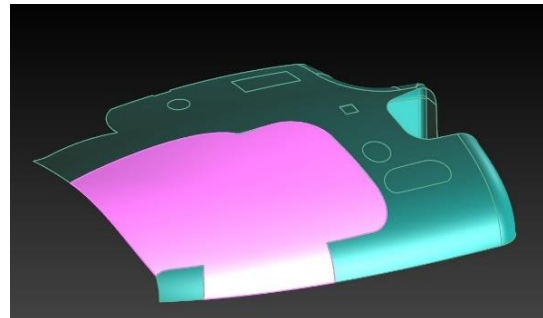
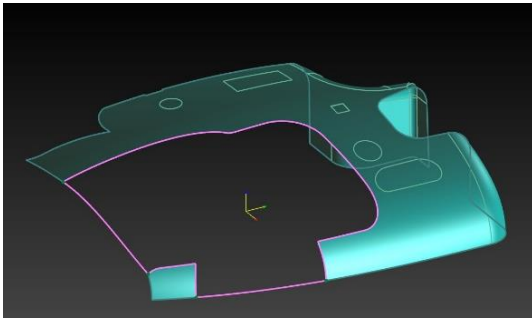
“G01 cross drilling cycle” which can control the machining speed at the parts where the holes cross, has been newly equipped. Up until now, when machining water holes by gun drilling, it was necessary to slowdown the machining speed in reference to where the holes cross and machine the entire hole to avoid tool damage. However, by using this function, it becomes possible to independently preset the machining speeds to the parts where the holes cross and this greatly shortens the machining time for the entirety of water hole machining.



Mar. 7, 2019

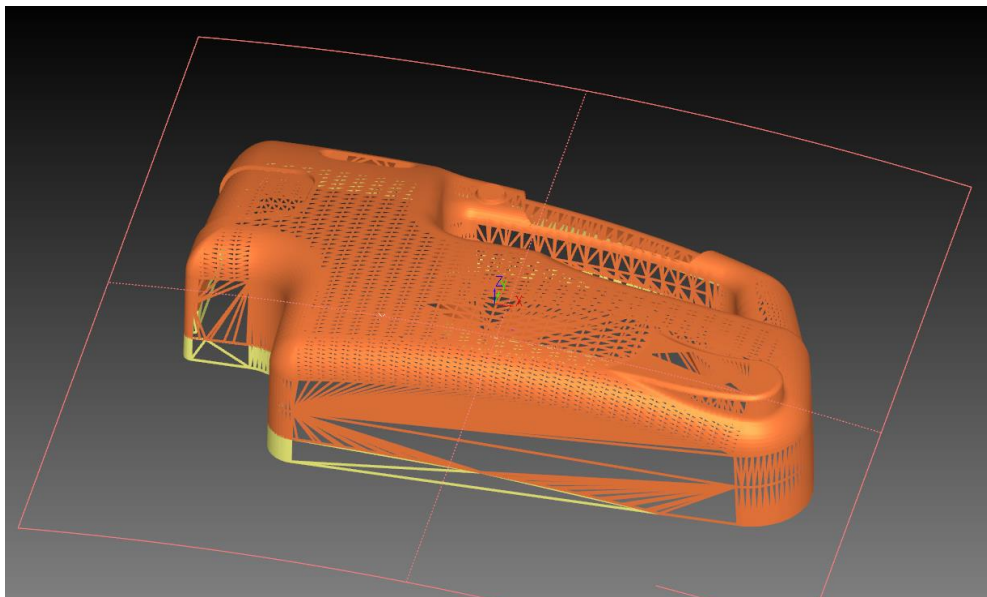
Strengthened Surface Plus

Functions have been added to surface plus (CAM-TOOL modeler option) to optionally add curves and automatically create filled curved surfaces created by connecting unclosed curved contours or endpoints of curves. In doing so, the efficiency of operations, for example, filling up holes, has been improved and this strongly supports model editing work which is necessary for preprocessing CAM.



Newly Established Polygon Editing

To expand the applications of creating machining data by polygon format, (the format that shows curved surfaces with aggregates of triangles) such as contactless measured data or decorative molding data, polygon editing has been equipped as a new option. This option can examine imported polygon as SLT and correct foul polygon and perform editing such as “trimming” or “filing holes” without depending on other software.



Equipped with 44 New Functions

Additionally, 44 new functions have been equipped such as strengthened and improved operations or expanded tooling DB.

* * *

Mar. 7, 2019

[Product Prices] (All prices below are in Japanese Yen.)

- CAM-TOOL 3-axis package : ¥ 5,200,000 -
- CAM-TOOL 5-axis package : ¥ 6,400,000
- Surface Plus : ¥ 500,000- *Optional module of Modeler
- Polygon Editor : ¥ 500,000- *Optional module of Modeler

*Taxes and the maintenance fees are excluded.

*The price depends on the module configuration.

[Annual Sales Target]

250 licenses * Including all option modules

[Company Information]

- Foundation : July 2, 2007 (*1)
- Capital : ¥500,000,000-
- Description of Business: Development/Sales/Support of CAD/CAM System for Mold & Die, and Production Management Systems

(*1) Our company is a CAD/CAM solution developer founded in 2010 as the result of a business integration and merger with Computer Engineering (founded in 1978) and Graphic Products (founded in 1981).

Questions and Inquiries

Mr. Tatsuya Izawa, Public Relations, C&G Systems INC.

Tokyo Headquarters (Shinagawa-ku, Tokyo)
Kitakyushu Headquarters (Kitakyushu-city, Fukuoka)

E-mail: cgs_pr@cgsys.co.jp <http://www.cgsys.co.jp/en/>